

# Mask Production Line Solution



By Testex Instrument Ltd  
May, 2020

# Content

Single Machine Introduction

Mask Production Line Combo Recommended

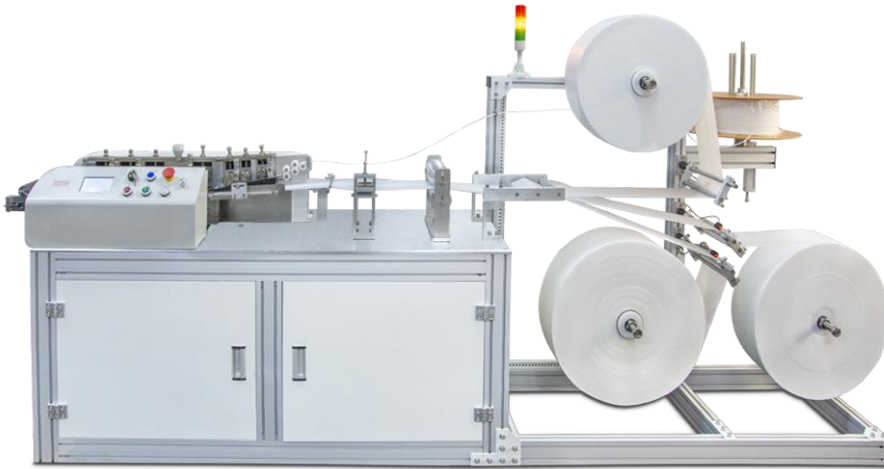
Mask Material Specifications & Cost

Why Choose Our Solution?

# TM120 Mask Bodies Making Machine

## Machine Introduction:

Automatic system to form 3 ply flat mask bodies, combine raw fabrics, three layers of pp non-woven, then form the creases, inserting nose clips and being weld together by ultrasonic welding device, finally cut into mask body pcs for next earloops welding procedure.



Model	TM120
Capacity*	120+ Pcs/Min
Mask Size Made	175 x 95 mm
Machine Size (L x W x H)	3300 x 600 x 1500 mm
Weight (N.W)	271 Kg
Power	220V 50/60Hz

*Machine Appearance might change accordingly, please confirm with our sales in advance.*

*\*Can be set to produce more than 120 pcs/min, but based on the testing data we have, the 120 pcs/min will be the best balance range between idea capacity and stability.*

# AUW60 Automatic Ultrasonic Earloop Welding Machine

## (With Automatic Mask Bodies Feeder)



### Machine Introduction:

Consists of 3 major parts, need one labor to put a pile of mask bodies to the feed system, then the feeder system will distribute the mask body to the conveyor, then the welding device will finish the earloop welding automatically.

Feature in labor saving and ideal capacity, stable running.

Model	AUW60
Mask Bodies Feeding	Automatic
Capacity*	50~60 pcs/min
Air Source Requirement	0.4 ~ 0.7 mPa
Machine Size (L x W x H)	1900 x 1000 x 1600 mm 1550 x 400 x 800 mm (conveyor)
Weight (N.W)	350 kg
Power	220V 50/60 Hz

*\*This is capacity of one set, to match the capacity of the tm120 mask body making machine(120 pcs/min), 2 sets will be needed.*

*Note: Machine Appearance might change accordingly, please confirm with our sales in advance.*

# MUW6 Manual Ultrasonic Earloop Welding Machine



## Machine Introduction:

Used to weld the earloops to the mask body, with the operation of labor, after welding the 4 connect points, then get the final masks, numbers of the welding machine can be adjusted to match the full capacity of the mask body machine, one machine one labor.

**Note:** We recommend the #2 one without a desk, to save the shipping volume and cost, you can easily find a table locally.

*Note: Machine Appearance might change accordingly, please confirm with our sales in advance.*

Model	MUW6
Capacity*	6 pcs/min
Control Mode	Foot Peddle
Machine Size (L x W x H)	650 x 400 x 1000 mm
Weight (N.W)	30 kg
Power	220V 50/60 Hz

*\*This is capacity of one set, we will quote you the total qty of this machine based on your demand.*

# ECM Earloop Cutting Machine



## Machine Introduction:

The rolled earloops are automatically cut to a specific length (18cm for universal mask size) for the next mask welding process.

Model	ECM
Capacity	120 ~ 240 pcs/min
Feeding Speed	700 mm / s
Max. Cutting Width	80 mm
Machine Size (L x W x H)	560 x 450 x 400 mm
Weight (N.W)	25 kg
Power	500w, 220V 50/60 Hz

*Note: Machine Appearance might change accordingly, please confirm with our sales in advance.*

# Mask Production Line Combo

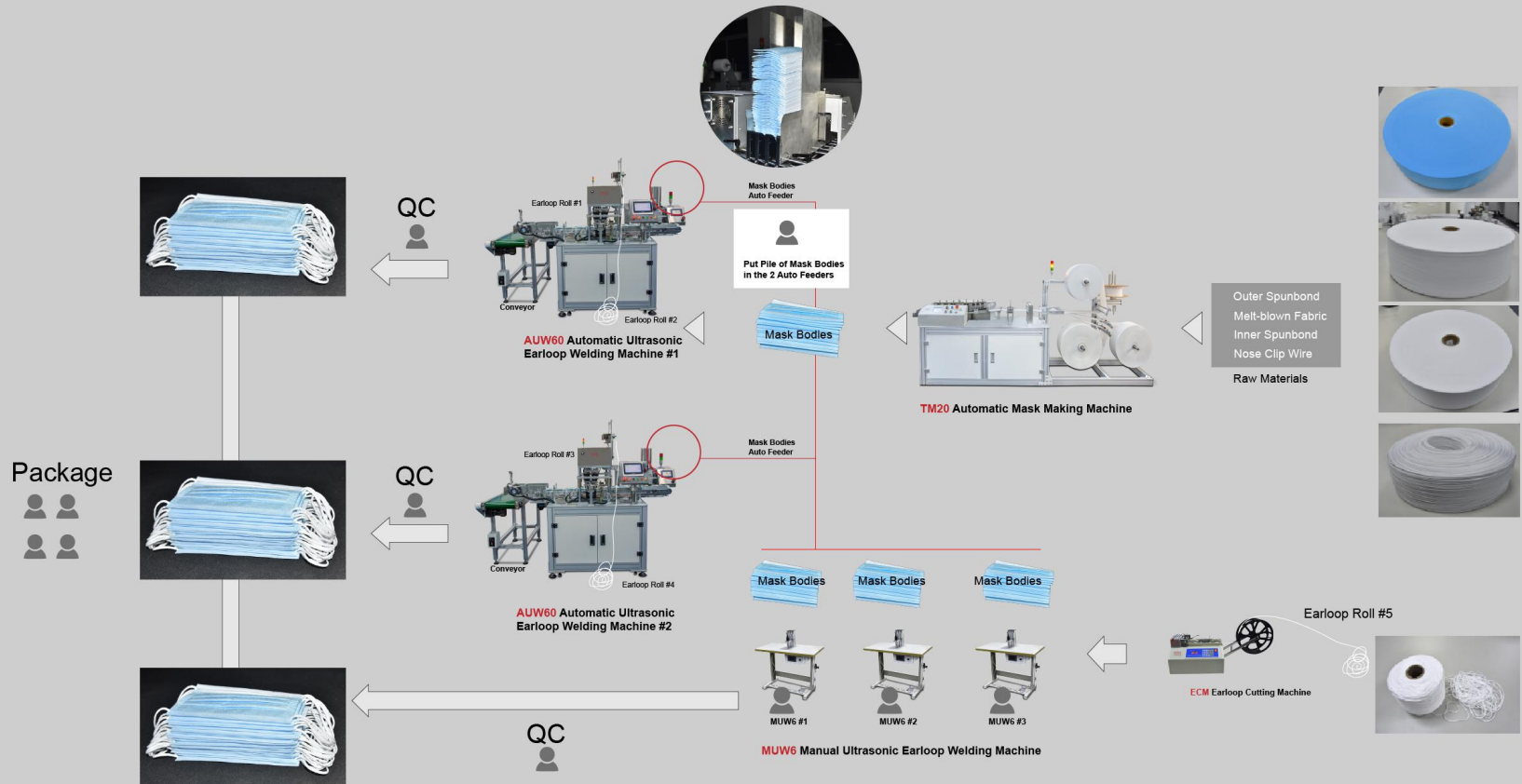
(Shipping Code: 8449001000)

Machine	Model	Qty	Capacity	Total Output
Automatic Mask Body Making Machine	TM120	1 Set	120+ pcs/min	120 pcs/min
Automatic Ultrasonic Earloop Welding Machine	AUW60	2 Sets	50~60 pcs/min/set	110 pcs/min
Manual Ultrasonic Earloop Welding Machine*	MUW6	3 Sets	6 pcs/min/set	18 pcs/min
Earloop Cutting Machine	ECM	1 Set	120 ~ 240 pcs/min	On demand

\*Note: The **MUW** is not only used as a support to AUW, but also a necessary tool to fix the masks which are not weld well by the **AUW**, to reduce the defect rate.

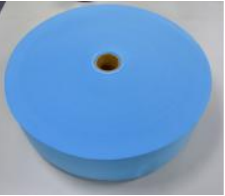


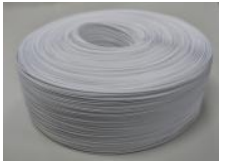

# Flat Mask Production Process

## Mask Production Line: Machines, Labors, Materials





## Disposable 3 Ply Mask Raw Material

	Photo	Color	GSM	Specifications	Length/ Mask	Weight /Mask (g)	1 kg material can produce masks (pcs)	1 ton material can produce masks (pcs)	How many days 1 ton material can be used (100k pcs/day) (days)	One day material consumption (100k pcs/day) (kg)
Outer Spunbond		Blue	25 g/m <sup>2</sup>	Width: 175 mm 7.2 kg/roll Dia. 55 cm	175 mm	0.81	1235	1,234,568	12	81
Meltblown		White	25 g/m <sup>2</sup>	Width: 175 mm 7.2 kg/roll Dia. 55 cm	175 mm	0.81	1235	1,234,568	12	81
Inner Spunbond		White	25 g/m <sup>2</sup>	Width: 195 mm 8 kg/roll Dia. 55 cm	175 mm	0.853	1172	1,172,333	12	85.3
Nose Clip Wire		White	Width 3.2 mm	350 m/kg	90 mm	0.26	3889	3,888,889	39	26
Elastic Earloop		White	Dia. 3 mm	730 m/kg	185 x 2 mm	0.51	1973	1,972,973	20	50.68

# Why Choose TESTEX?



**TESTEX (TESTEX INSTRUMENT LTD)** is a **national high-tech enterprise** and **SGS ISO certification** company that develops and manufactures testing instruments for textile laboratories. 90% of the TESTEX brand instruments are sold to Europe, America, and Asia. Customers include NASA, National laboratories such as the Naval Academy and university research institutes, as well as international inspection agencies such as ITS, SGS, etc., and automotive brands (interior textiles) such as Land Rover, and apparel brands NIKE, Under Armour, Uniqlo, etc.

There are more than 100 models of testing equipment developed and manufactured by TESTEX, covering the testing of the performance of various types of textiles and their properties, as well as testing equipment for epidemic prevention materials such as masks and protective clothing.

TESTEX has rich experience in the R&D, manufacturing, sales, after-sales training of equipment, and always takes the core value of "We endeavor to achieve our customers' success, then achieve our staffs' value, thus achieve our shareholders' goals."

## Mask Making Machine, Developed, Tested, Used by Ourselves

Quality and Service are the bottom line of us, quality concerns has helped us won our reputation in the textile testing instrument market since our foudation(2010).

When the epidemic is over, we may not produce the mask making machine again, but we hope that all customers who have choosed to buy mask machines from us, can know TESTEX's high demand for product quality, and our pursuit of quality has never changed.



